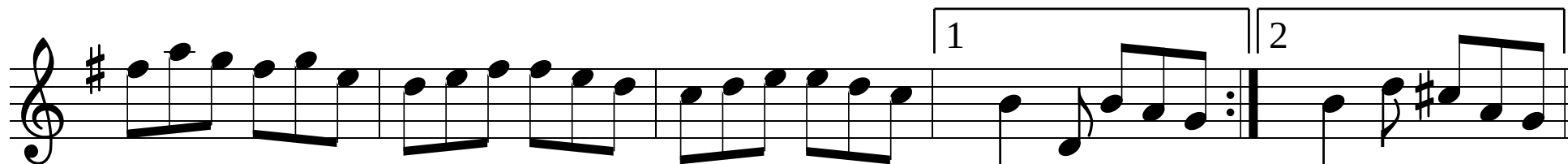
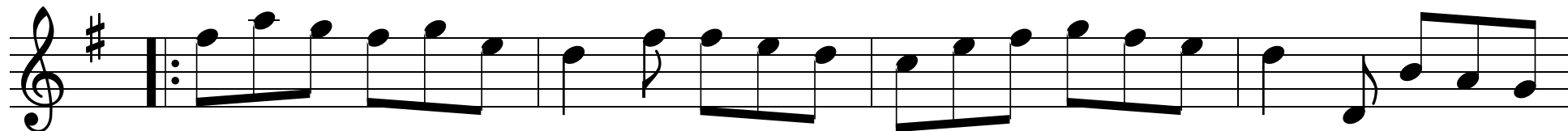
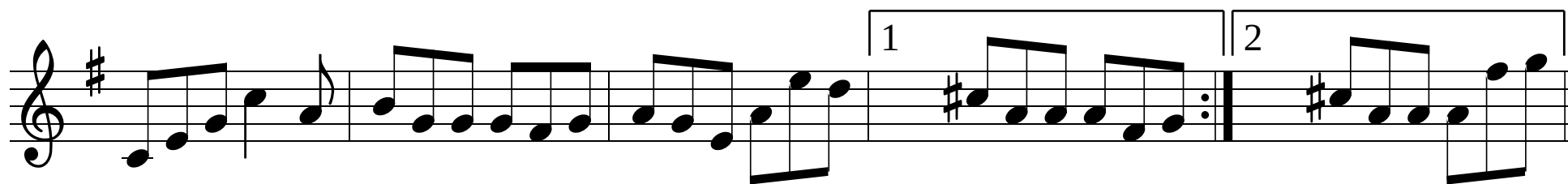
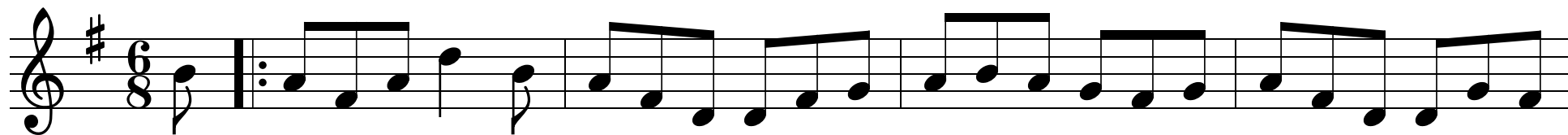


The Trip To O'Flaherty's

Liz Carroll



The image displays a musical score for a jig, consisting of two staves of music. Both staves are written in treble clef and use a key signature of one sharp (F#), indicating the key of D major. The music is composed of eighth and sixteenth notes, with some beamed eighth notes and sixteenth notes. The first staff begins with a repeat sign and ends with a double bar line. The second staff begins with a repeat sign and ends with a double bar line. The overall structure suggests a single melodic line with a repeat section.